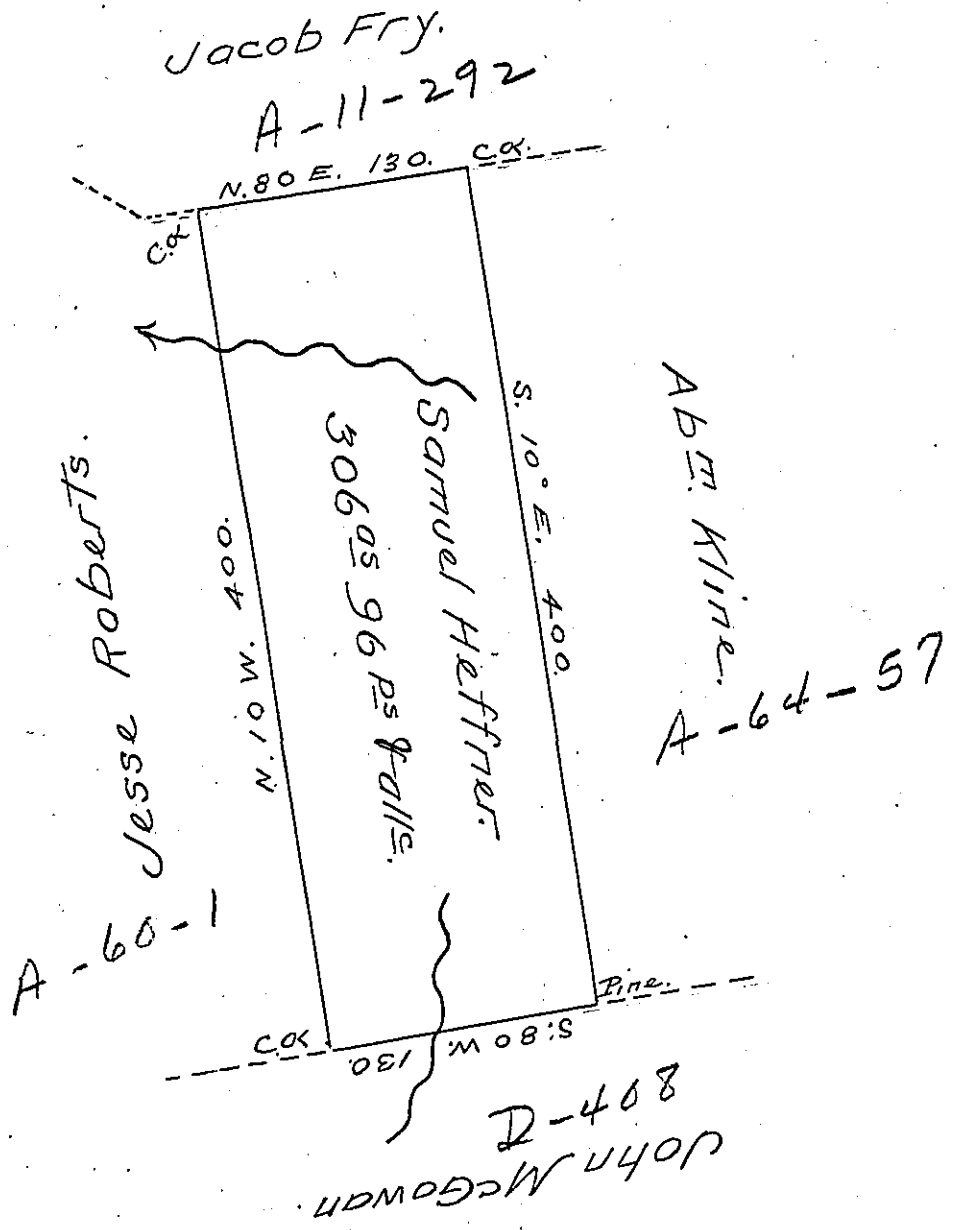


W



Draught of a Tract of Land situate on the Waters of Black Creek in Sugar Loaf Township Luzerne County and adjoining Lands Surveyed to Jess- Roberts and others Containing Three Hundred and Six acres & ninety six perches with the usual allowance of six per cent &c. Surveyed the above described Tract of Land the 29<sup>th</sup> day of October A<sup>o</sup> D<sup>i</sup> 1830 for Samuel Heffner by virtue of his Warrant dated the 17<sup>th</sup> day of March A<sup>o</sup> D<sup>i</sup> 1830.

Henry Colt D.S.

To Jacob Spangler Esq<sup>r</sup> }  
 Surveyor General }

IN TESTIMONY that the above is a copy of the original remaining on file in the Department of Internal Affairs of Pennsylvania, made conformably to an Act of Assembly approved the 16th day of February, 1833, I have hereunto set my Hand and caused the Seal of said Department to be affixed at Harrisburg, this sixteenth day of March 1905

*Roac R. Brown*  
 Secretary of Internal Affairs.